

2 BEDROOM

Semi-detached House
Fiveland Road, Burton on Trent DE15 9AS
Plots 1, 8 & 9



CGI Drawing of a typical plot



2 Bedroom Semi-detached House			
Kitchen/dining	4.30m x 3.76m	14'1" x 12' 4"	
Living	4.29m x 3.69m	14'1" x 12' 1"	
Bedroom 1	4.30m x 3.05m	14'1" x 9' 12"	
Bedroom 2	4.30m x 2.79m	14'1" x 9' 2"	
Bathroom	2.15m x 2.11m	7'1" x 6' 11"	

Total Floor Area: 71.00m² - 764.23 sq.ft

Please note: All dimensions are taken from the widest and longest points of each room. Some properties will be 'handed' (mirror image) to floor plan shown.

Specification

- Fitted kitchen with oven, hob & extractor
- Bathroom with shower over bath
- Double glazed windows
- Carpets & flooring throughout
- Gas central heating
- Turfed rear garden
- Parking
- NHBC warranty

Please note: CGI's are for illustrative purposes only; external finishes including roof tile colours, brick, stone, render and landscaping may vary between plots. Properties may also be built 'handed' (mirror image) of those illustrated. Midland Heart reserves the right to alter and change certain aspects of a property – therefore it is recommended that you speak to a sales consultant for further details. All dimensions are taken from the widest and longest points of each room; they are approximate and should not be used for carpet sizes, appliance spaces and furniture. These particulars do not form part of a contract or warranty.

For further details contact
our sales team on:
0800 44 55 67

or email:
sales@midlandheart.org.uk

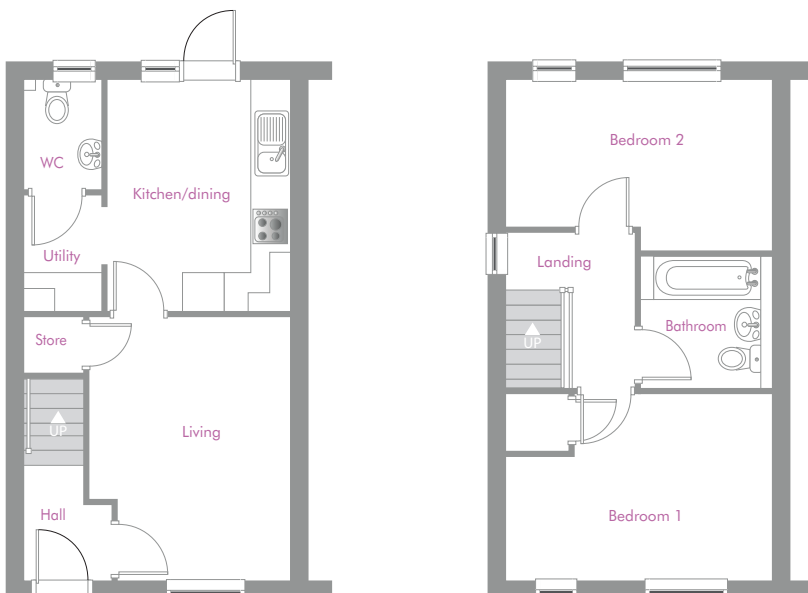
midland
heart

2 BEDROOM

Semi-detached House
Fiveland's Road, Burton on Trent DE15 9AS
Plots 2, 3, 4, 5, 6, 7, 10, 57 & 58



CGI Drawing of a typical plot



2 Bedroom Semi-detached House		
Kitchen/dining	3.76m x 2.97m	12'4" x 9' 9"
Living	4.28m x 3.25m	14'0" x 10' 8"
Bedroom 1	4.30m x 3.05m	14'1" x 9' 12"
Bedroom 2	4.30m x 2.79m	14'1" x 9' 2"
Bathroom	2.15m x 2.12m	7'1" x 6' 12"

Total Floor Area: 70.00m² - 753.47 sq.ft

Please note: All dimensions are taken from the widest and longest points of each room. Some properties will be 'handed' (mirror image) to floor plan shown.

Specification

- Fitted kitchen with oven, hob & extractor
- Bathroom with shower over bath
- Double glazed windows
- Carpets & flooring throughout
- Gas central heating
- Turfed rear garden
- Parking
- NHBC warranty

Please note: CGI's are for illustrative purposes only; external finishes including roof tile colours, brick, stone, render and landscaping may vary between plots. Properties may also be built 'handed' (mirror image) of those illustrated. Midland Heart reserves the right to alter and change certain aspects of a property – therefore it is recommended that you speak to a sales consultant for further details. All dimensions are taken from the widest and longest points of each room; they are approximate and should not be used for carpet sizes, appliance spaces and furniture. These particulars do not form part of a contract or warranty.

For further details contact
our sales team on:

0800 44 55 67

or email:

sales@midlandheart.org.uk

midland
heart

2 BEDROOM

Semi-detached House
Fiveland Road, Burton on Trent DE15 9AS
SITE PLAN



Key	Housetype	Plot Number
	2 Bedroom Semi-Detached House	1, 8 & 9
	2 Bedroom Semi-Detached House	2, 3, 4, 5, 6, 7, 10, 57 & 58

For further details contact our sales team on:
0800 44 55 67 or email: sales@midlandheart.org.uk

Please note CGI's are for illustrative purposes only; external finishes including roof tile colours, brick, stone, render and landscaping may vary between plots. Properties may also be built 'handed' (mirror image) of those illustrated. Midland Heart reserves the right to alter and change certain aspects of a property – therefore it is recommended that you speak to a sales consultant for further details. All dimensions are taken from the widest and longest points of each room; they are approximate and should not be used for carpet sizes, appliance spaces and furniture. These particulars do not form part of a contract or warranty.

midland
heart 

2 BEDROOM

Semi-detached House
Fiveland Road, Burton on Trent DE15 9AS
Prices



Plot	Housetype	Address	Available	45% Share	100% Price	Monthly Rent	Building Insurance	Management Charge	Service Charge
1	2 Bedroom Semi-Detached House	5 Fiveland Road, Burton on Trent, DE15 9AS.	Expected Spring 2022	£83,250	£185,000	£233.18	£4.13	£22.00	£9.02
2	2 Bedroom Semi-Detached House	7 Fiveland Road, Burton on Trent, DE15 9AS.	Expected Spring 2022	£83,250	£185,000	£233.18	£4.13	£22.00	£9.02
3	2 Bedroom Semi-Detached House	9 Fiveland Road, Burton on Trent, DE15 9AS.	Expected Spring 2022	£83,250	£185,000	£233.18	£4.13	£22.00	£9.02
4	2 Bedroom Semi-Detached House	11 Fiveland Road, Burton on Trent, DE15 9AS.	Expected Spring 2022	£83,250	£185,000	£233.18	£4.13	£22.00	£9.02
5	2 Bedroom Semi-Detached House	15 Fiveland Road, Burton on Trent, DE15 9AS.	Expected Spring 2022	£83,250	£185,000	£233.18	£4.13	£22.00	£9.02
6	2 Bedroom Semi-Detached House	17 Fiveland Road, Burton on Trent, DE15 9AS.	Expected Spring 2022	£83,250	£185,000	£233.18	£4.13	£22.00	£9.02
7	2 Bedroom Semi-Detached House	19 Fiveland Road, Burton on Trent, DE15 9AS.	Expected Spring 2022	£83,250	£185,000	£233.18	£4.13	£22.00	£9.02
8	2 Bedroom Semi-Detached House	21 Fiveland Road, Burton on Trent, DE15 9AS.	Expected Spring 2022	£83,250	£185,000	£233.18	£4.13	£22.00	£9.02
9	2 Bedroom Semi-Detached House	23 Fiveland Road, Burton on Trent, DE15 9AS.	Expected Spring 2022	£83,250	£185,000	£233.18	£4.13	£22.00	£9.02
10	2 Bedroom Semi-Detached House	25 Fiveland Road, Burton on Trent, DE15 9AS.	Expected Spring 2022	£83,250	£185,000	£233.18	£4.13	£22.00	£9.02
57	2 Bedroom Semi-Detached House	16 Fiveland Road, Burton on Trent, DE15 9AS.	Expected Spring 2022	£83,250	£185,000	£233.18	£4.13	£22.00	£9.02
58	2 Bedroom Semi-Detached House	14 Fiveland Road, Burton on Trent, DE15 9AS.	Expected Spring 2022	£83,250	£185,000	£233.18	£4.13	£22.00	£9.02

For further details contact our sales team on:

0800 44 55 67 or email: sales@midlandheart.org.uk

Please note CGI's are for illustrative purposes only; external finishes including roof tile colours, brick, stone, render and landscaping may vary between plots. Properties may also be built 'handed' (mirror image) of those illustrated. Midland Heart reserves the right to alter and change certain aspects of a property – therefore it is recommended that you speak to a sales consultant for further details. All dimensions are taken from the widest and longest points of each room; they are approximate and should not be used for carpet sizes, appliance spaces and furniture. These particulars do not form part of a contract or warranty.

midland
heart