

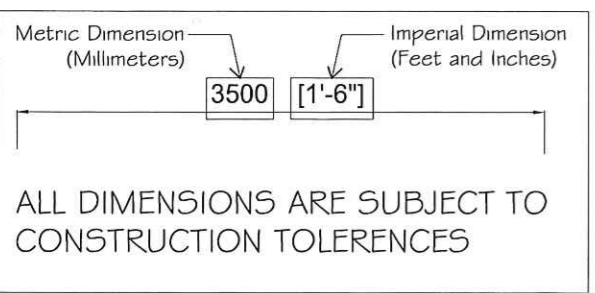
KEY TO ELECTRICAL SYMBOLS

-  LST (LOW SURFACE TEMPERATURE) RADIATOR
-  SEMI-RECESSED mcb CONSUMER UNIT
-  CEILING MOUNTED/SUSPENDED LUMINAIRE WITH INTEGRAL BATTERY/INVERTER PACK TO PROVIDE EMERGENCY OPERATION.
-  CEILING MOUNTED/SUSPENDED LUMINAIRE
-  CEILING MOUNTED SPOT LIGHTS
-  WALL MOUNTED UP LIGHT
-  WARDEN CALL DISPERSED ALARM UNIT CW INTEGRAL PULL CORD: DETAIL 'B' REFERS.
-  TELEPHONE POINT
-  WARDEN CALL ASSISTANCE PULL CORD
-  SHAVER SOCKET WITH INTEGRAL ISOLATING TRANSFORMER
-  SINGLE 13AMP UNSWITCHED SOCKET OUTLET
-  TWIN 13AMP SWITCHED SOCKET OUTLET
-  LIGHTING CONTROL SWITCH.
-  SINGLE TELEVISION OUTLET BOX.
-  TRIPLE OUTLET BOX. TERRESTRIAL TELEVISION, SATELLITE, AND RADIO. (2 GANG BOX 47mm. DEEP).

NOTE:
ALL ELECTRICAL & MECHANICAL LOCATIONS TO BE CONFIRMED BY ON-SITE CHECK.

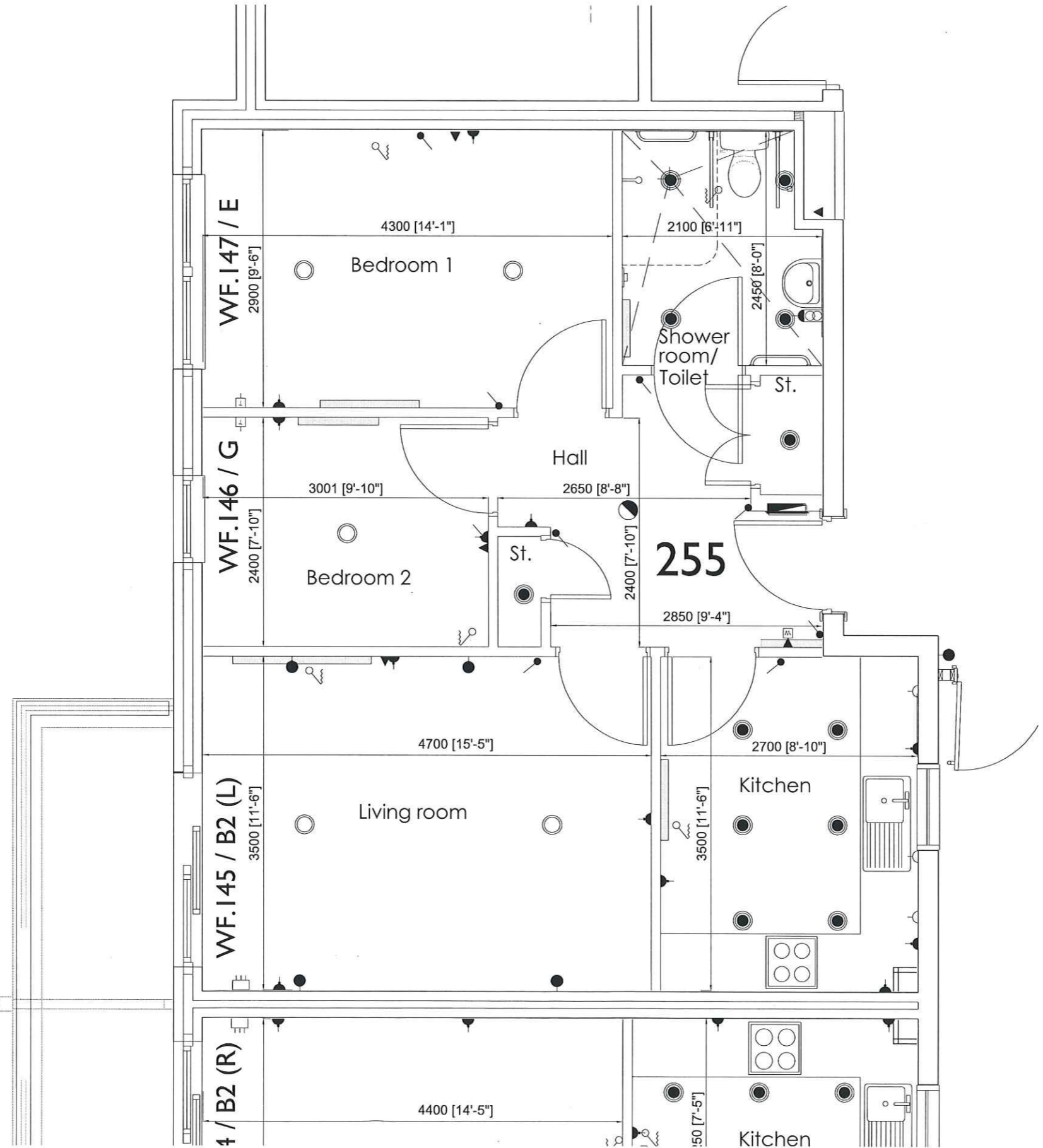
PLAN PRODUCED FROM THE FOLLOWING DRAWINGS:
HUM - 16503/AA/0102
CIE - 3527/E702
KERSHAW - 1984/L002
COORDINATED DRAWING - 1984/C102

KEY TO DIMENSIONS



Copyright of this drawing is vested in the Architect and it must not be copied or reproduced without consent. Figured dimensions only are to be taken from this drawing. All contractors must visit the site and be responsible for taking and checking all dimensions relative to their work. Hulme Upright Manning to be advised of any variation between drawings and site conditions.
DO NOT SCALE OFF THIS DRAWING. IF IN DOUBT ASK

Rev.	Drawn	Comments	Date
------	-------	----------	------



HULME UPRIGHT MANNING
ARCHITECTS TOWN PLANNERS INTERIOR DESIGNERS

Highpoint Festival Park
Hanley Stoke-on-Trent ST1 5SH
Tel: 01782 208600 Email - stoke@hum-arch.co.uk

LEEK MANCHESTER STOKE-ON-TRENT
Tel: 01782 206080 Fax: 01782 206080
Web - www.hulmeupright.co.uk

Client
THE EXTRACARE CHARITABLE TRUST

Project
ST. CRISPIN, DUSTON, NORTHAMPTON
FOR TOUCHSTONE EXTRACARE BY GLEESON

Title
**TYPE "B" APARTMENT - SILVER STANDARD
TYPICAL 2 BED UNIT - Plot 255**

Status

Date DEC '05 Drawn MF
Scale 1:50 Checked
Job Ref. 19438 Drawing No. AL [0] 255 Revision

Computer File Ref. H:\6503-491