

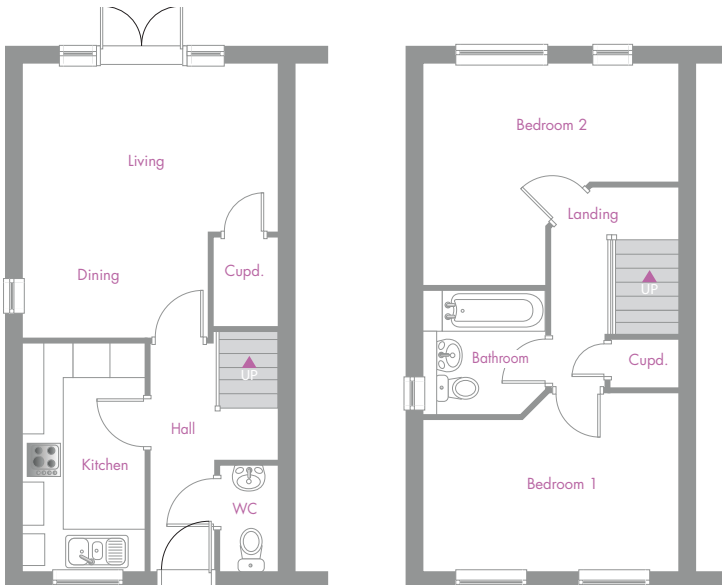
# TRADITIONAL STYLE 2 Bedroom Semi-Detached House

Aviation Lane, Burton on Trent DE13

Plot 1



CGI Drawing of a typical Semi-Detached plot



2 Bedroom Semi-Detached House		
Kitchen	3.88m x 2.12m	12'9" x 6'12"
Living	4.57m x 4.26m	14'12" x 13'12"
Bedroom 1	4.26m x 3.00m	13'12" x 9'10"
Bedroom 2	4.26m x 3.70m	13'12" x 12'11"
Bathroom	2.14m x 1.76m	7'0" x 5'9"

Total Floor Area: 72.55m<sup>2</sup> - 780.90 sq.ft

**Please note:** All dimensions are taken from the widest and longest points of each room. Some properties will be 'handed' (mirror image) to floorplan shown.

## Specification

- Fitted kitchen with oven, hob & extractor
- Bathroom with shower over bath
- Double glazed windows
- Carpets & flooring throughout
- Gas central heating
- Turfed rear garden
- Parking
- NHBC warranty

Please note CGI's are for illustrative purposes only; external finishes including roof tile colours, brick, stone, render and landscaping may vary between plots. Properties may also be built 'handed' (mirror image) of those illustrated. Midland Heart reserves the right to alter and change certain aspects of a property – therefore it is recommended that you speak to a sales consultant for further details. All dimensions are taken from the widest and longest points of each room; they are approximate and should not be used for carpet sizes, appliance spaces and furniture. These particulars do not form part of a contract or warranty.

For further details contact  
our sales team on:  
**0800 44 55 67**

or email:  
[sales@midlandheart.org.uk](mailto:sales@midlandheart.org.uk)



# DOUBLE FRONTED 3 Bedroom Semi-Detached House

Aviation Lane, Burton on Trent DE13

Plot 2



CGI Drawing of a typical Semi-Detached plot



## 3 Bedroom Semi-Detached House

Kitchen/dining	4.95m x 3.29m	16'3" x 10'10"
Living	4.95m x 3.12m	16'3" x 10'3"
Bedroom 1	3.29m x 2.89m	10'10" x 9'6"
Bedroom 2	4.10m x 2.71m	13'5" x 8'11"
Bedroom 3	3.06m x 2.18m	10'0" x 7'2"
Bathroom	2.17m x 2.00m	7'1" x 6'7"

Total Floor Area: 84.3m<sup>2</sup> - 907.39 sq.ft

**Please note:** All dimensions are taken from the widest and longest points of each room. Some properties will be 'handed' (mirror image) to floorplan shown.

## Specification

- Fitted kitchen with oven, hob & extractor
- Bathroom with shower over bath
- Double glazed windows
- Carpets & flooring throughout
- Gas central heating
- Turfed rear garden
- Parking
- NHBC warranty

Please note CGI's are for illustrative purposes only; external finishes including roof tile colours, brick, stone, render and landscaping may vary between plots. Properties may also be built 'handed' (mirror image) of those illustrated. Midland Heart reserves the right to alter and change certain aspects of a property - therefore it is recommended that you speak to a sales consultant for further details. All dimensions are taken from the widest and longest points of each room; they are approximate and should not be used for carpet sizes, appliance spaces and furniture. These particulars do not form part of a contract or warranty.

For further details contact  
our sales team on:  
**0800 44 55 67**

or email:  
[sales@midlandheart.org.uk](mailto:sales@midlandheart.org.uk)

**midland**  
heart



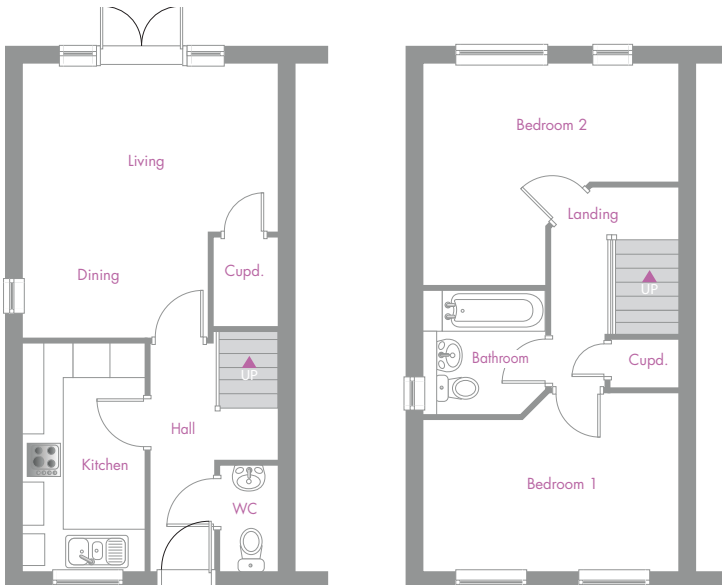
# TRADITIONAL STYLE 2 Bedroom End-Terrace House

Aviation Lane, Burton on Trent DE13

Plots 3 & 5



CGI Drawing of a typical Terrace plot



2 Bedroom End-Terrace House		
Kitchen	3.88m x 2.12m	12'9" x 6'12"
Living	4.57m x 4.26m	14'12" x 13'12"
Bedroom 1	4.26m x 3.00m	13'12" x 9'10"
Bedroom 2	4.26m x 3.70m	13'12" x 12'11"
Bathroom	2.14m x 1.76m	7'0" x 5'9"

Total Floor Area: 72.55m<sup>2</sup> - 780.90 sq.ft

**Please note:** All dimensions are taken from the widest and longest points of each room. Some properties will be 'handed' (mirror image) to floorplan shown.

## Specification

- Fitted kitchen with oven, hob & extractor
- Bathroom with shower over bath
- Double glazed windows
- Carpets & flooring throughout
- Gas central heating
- Turfed rear garden
- Parking
- NHBC warranty

Please note CGI's are for illustrative purposes only; external finishes including roof tile colours, brick, stone, render and landscaping may vary between plots. Properties may also be built 'handed' (mirror image) of those illustrated. Midland Heart reserves the right to alter and change certain aspects of a property – therefore it is recommended that you speak to a sales consultant for further details. All dimensions are taken from the widest and longest points of each room; they are approximate and should not be used for carpet sizes, appliance spaces and furniture. These particulars do not form part of a contract or warranty.

For further details contact  
our sales team on:  
**0800 44 55 67**

or email:  
[sales@midlandheart.org.uk](mailto:sales@midlandheart.org.uk)





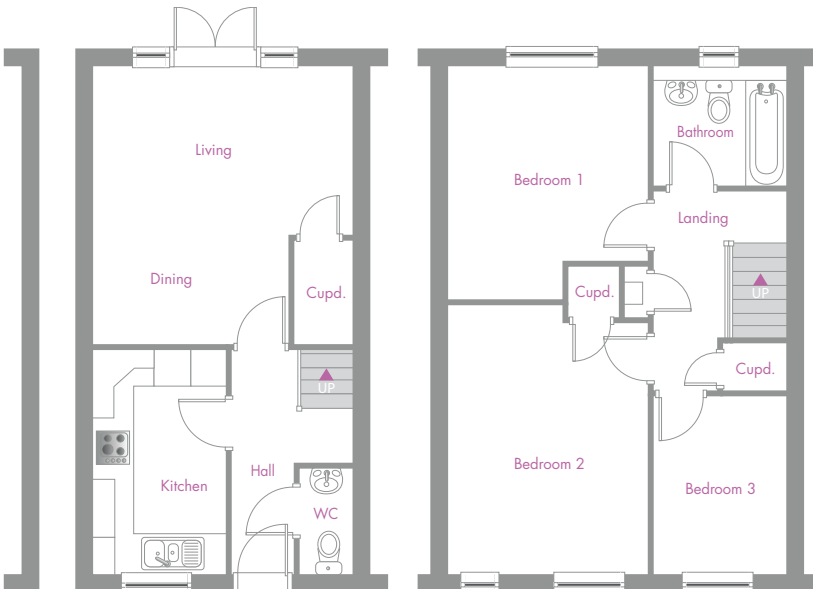
# TRADITIONAL STYLE 3 Bedroom Mid-Terrace House

Aviation Lane, Burton on Trent DE13

Plot 4



CGI Drawing of a typical Terrace plot



3 Bedroom Mid-Terrace House		
Kitchen	3.78m x 2.22m	12'5" x 7'3"
Living/dining	4.67m x 4.35m	15'4" x 14'3"
Bedroom 1	3.92m x 3.40m	12'10" x 11'2"
Bedroom 2	4.54m x 3.40m	14'11" x 11'2"
Bedroom 3	3.00m x 2.24m	9'10" x 7'4"
Bathroom	2.24m x 2.00m	7'4" x 6'7"

Total Floor Area: 85.58m<sup>2</sup> - 921.13 sq.ft

**Please note:** All dimensions are taken from the widest and longest points of each room. Some properties will be 'handed' (mirror image) to floorplan shown.

## Specification

- Fitted kitchen with oven, hob & extractor
- Bathroom with shower over bath
- Double glazed windows
- Carpets & flooring throughout
- Gas central heating
- Turfed rear garden
- Parking
- NHBC warranty

Please note CGI's are for illustrative purposes only; external finishes including roof tile colours, brick, stone, render and landscaping may vary between plots. Properties may also be built 'handed' (mirror image) of those illustrated. Midland Heart reserves the right to alter and change certain aspects of a property - therefore it is recommended that you speak to a sales consultant for further details. All dimensions are taken from the widest and longest points of each room; they are approximate and should not be used for carpet sizes, appliance spaces and furniture. These particulars do not form part of a contract or warranty.

For further details contact our sales team on:  
**0800 44 55 67**





or email:  
[sales@midlandheart.org.uk](mailto:sales@midlandheart.org.uk)



# AVIATION LANE

2 & 3 Bedroom Houses  
 Aviation Lane, Burton on Trent DE13  
 SITE PLAN



Key	Housetype	Plot Number
	2 Bedroom Semi-Detached House	1
	2 Bedroom End-Terrace House	3, 5
	3 Bedroom Semi-Detached House	2
	3 Bedroom Mid-Terrace House	4

For further details contact our sales team on:  
**0800 44 55 67** or email: [sales@midlandheart.org.uk](mailto:sales@midlandheart.org.uk)

Please note CGI's are for illustrative purposes only; external finishes including roof tile colours, brick, stone, render and landscaping may vary between plots. Properties may also be built 'handed' (mirror image) of those illustrated. Midland Heart reserves the right to alter and change certain aspects of a property – therefore it is recommended that you speak to a sales consultant for further details. All dimensions are taken from the widest and longest points of each room; they are approximate and should not be used for carpet sizes, appliance spaces and furniture. These particulars do not form part of a contract or warranty.

