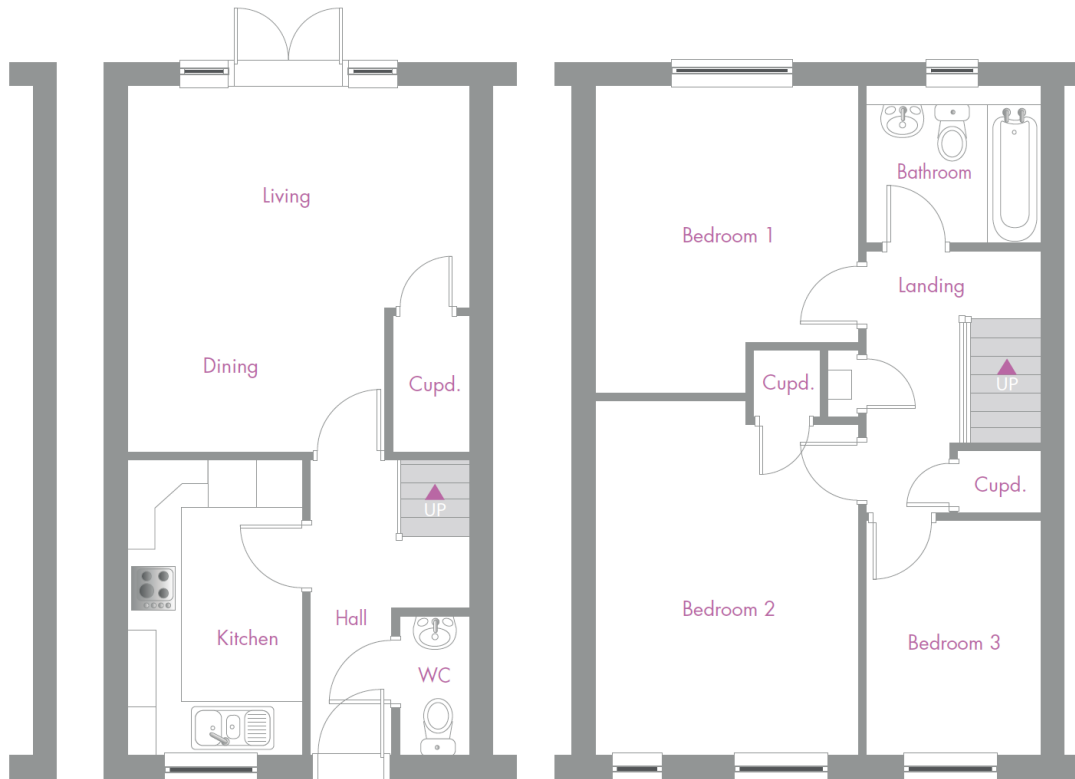


3 Bedroom Mid-Terrace Floor Plan



3 Bedroom Mid-Terrace House

Kitchen	3.78m x 2.22m	12'5" x 7'3"
Living/dining	4.67m x 4.35m	15'4" x 14'3"
Bedroom 1	3.92m x 3.40m	12'10" x 11'2"
Bedroom 2	4.54m x 3.40m	14'11" x 11'2"
Bedroom 3	3.00m x 2.24m	9'10" x 7'4"
Bathroom	2.24m x 2.00m	7'4" x 6'7"

Total Floor Area: 85.58m² - 921.13 sq.ft

Please note: All dimensions are taken from the widest and longest points of each room. Some properties will be 'handed' (mirror image) to floorplan shown.