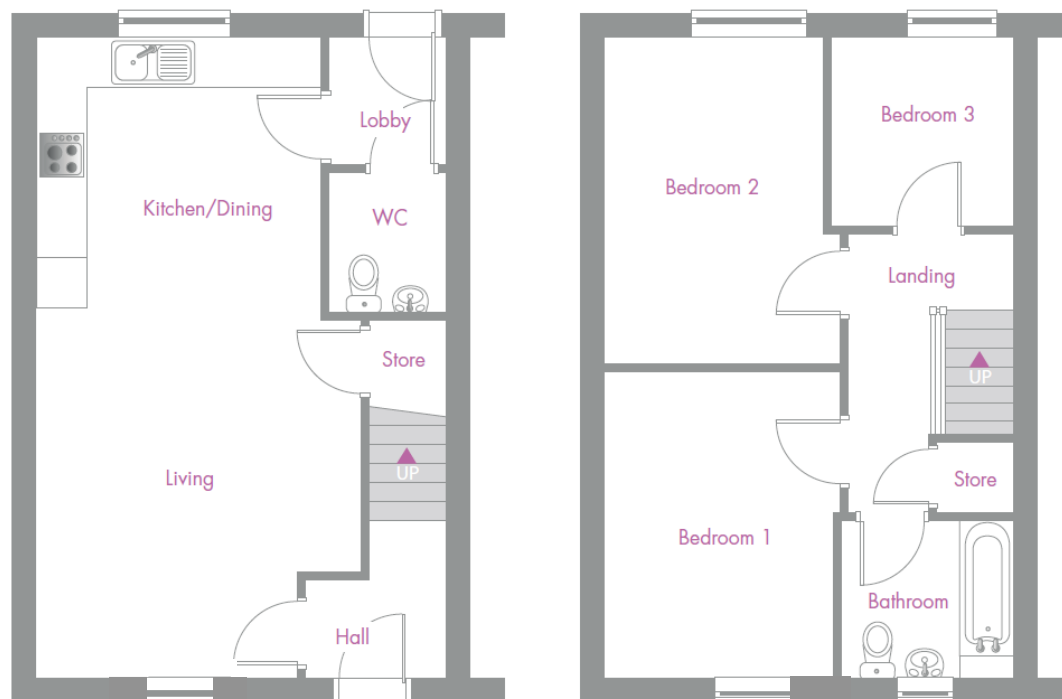


3 Bedroom Floor Plan



Kitchen/dining/ Living	8.17m x 4.14m	26'9" x 13'7"
Bedroom 1	3.94m x 3.04m	12'11" x 9'11"
Bedroom 2	4.16m x 3.04m	13'8" x 9'11"
Bedroom 3	2.44m x 2.35m	8'0" x 7'8"
Bathroom	2.19m x 2.04m	7'2" x 6'8"

Total Floor Area: 83.60m² - 900.00 sq.ft

Please note: All dimensions are taken from the widest and longest points of each room. Some properties will be 'handed' (mirror image) to floorplan shown.

Specification

- Fitted kitchen with oven, hob & extractor
- Bathroom with shower over bath
- Double glazed windows
- Carpets & flooring throughout
- Gas central heating
- Turfed rear garden
- Parking
- NHBC warranty

For further details contact
our sales team on:

0800 44 55 67

or email:

sales@midlandheart.org.uk

Floor plans depict a typical layout of this house type and are for illustrative purposes only. Properties may also be built 'handed' (mirror image) of those illustrated. Midland Heart reserves the right to alter and change certain aspects of a property – for exact plot specification please request a viewing. All dimensions are approximate only & estimate the widest and longest points of each room. As they are only approximate, they should not be used for carpet sizes, appliance spaces and furniture. These particulars do not form part of a contract or warranty.