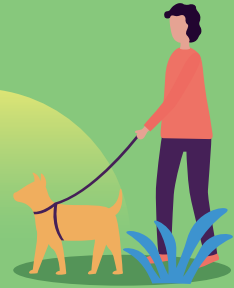


Keeping safe by the canal



Please remember when you're by the canal:



Always hold a child's hand when
by the water



Make sure the brake is on a pram
or pushchair



Look out for other people on busy
towpaths before stepping back



Talk about staying safe when
you're out and about near water



Repeat safety messages
regularly to help young
children remember what
to do



Keep pets on short leads
around water



Do not get into the water
after them if they jump in

Be aware of strangers on the canal, this could be people mooring on the canal or people using the canal tow path

- People will have access to the estate
– it's important to keep children safe and make them aware of dos and don'ts around strangers
- If you have problems with people on your estate causing antisocial behaviour please visit **www.midlandheart.org.uk/asb** for more information
- If there is noise from the canal, please contact your Local Authority
- If you experience behaviour from any individuals that makes you feel unsafe please call the police on 111 or 999 if it's an emergency.



Contacting River and Canal Trust

Please be aware that we're not responsible for any maintenance or issues with the canal. If you notice any problems, you need to get in touch with the Canal and River Trust

Emergencies - In an emergency, call 999 immediately.

Urgent calls - If the situation is urgent, but not an emergency, call the Canal and River Trust on their 24-hour contact number: 0800 47 999 47

If the situation isn't urgent, you can call **0303 040 4040** or visit: **www.canalrivertrust.org.uk/contact-us**